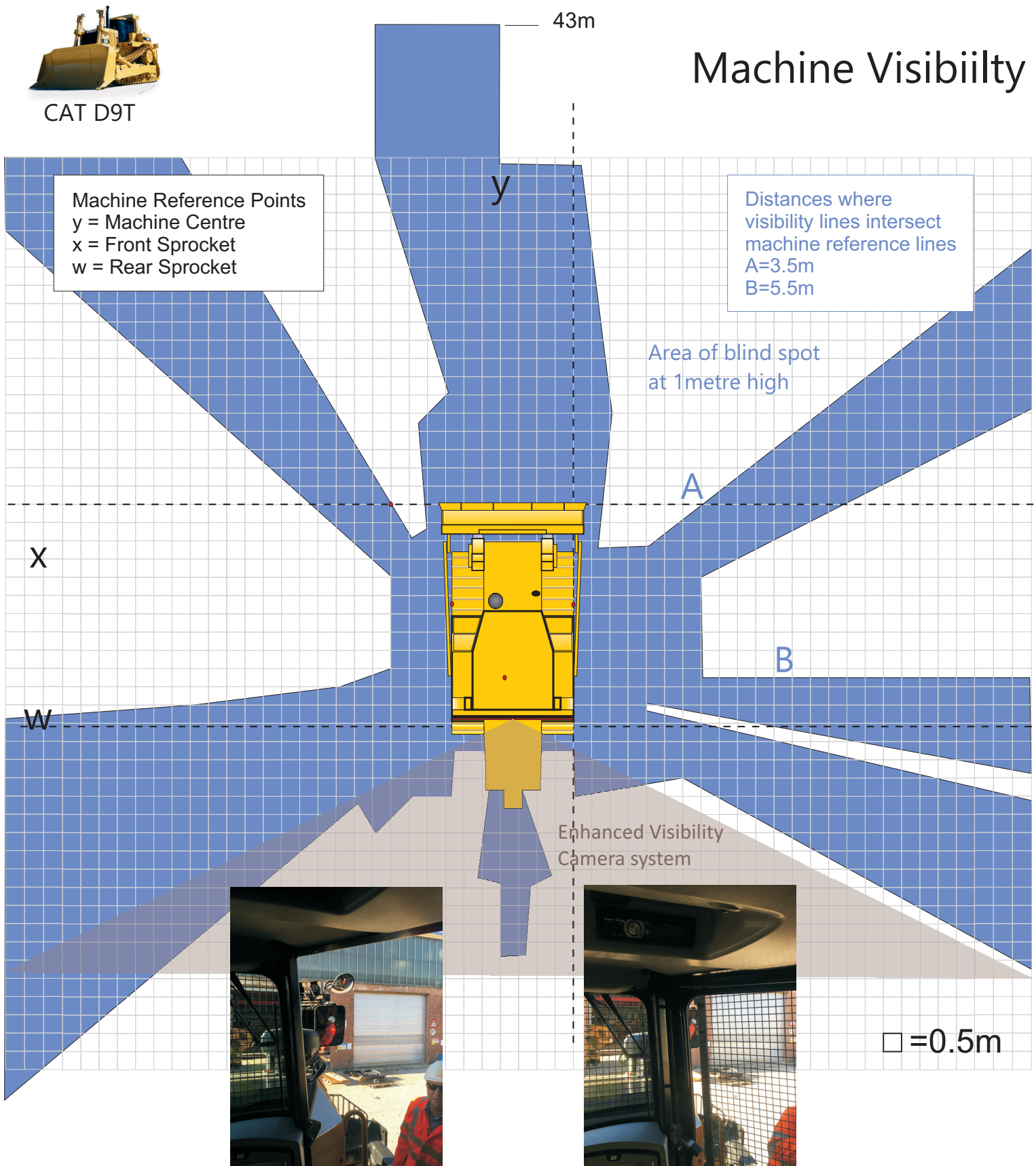




CAT D9T

# Machine Visibiilty



Door Open

Door Closed

Partial visibility from existing CAT mirror when the door is closed





CAT D9T

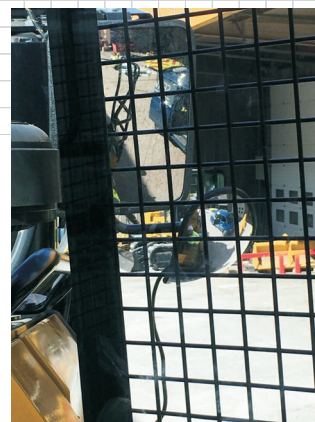
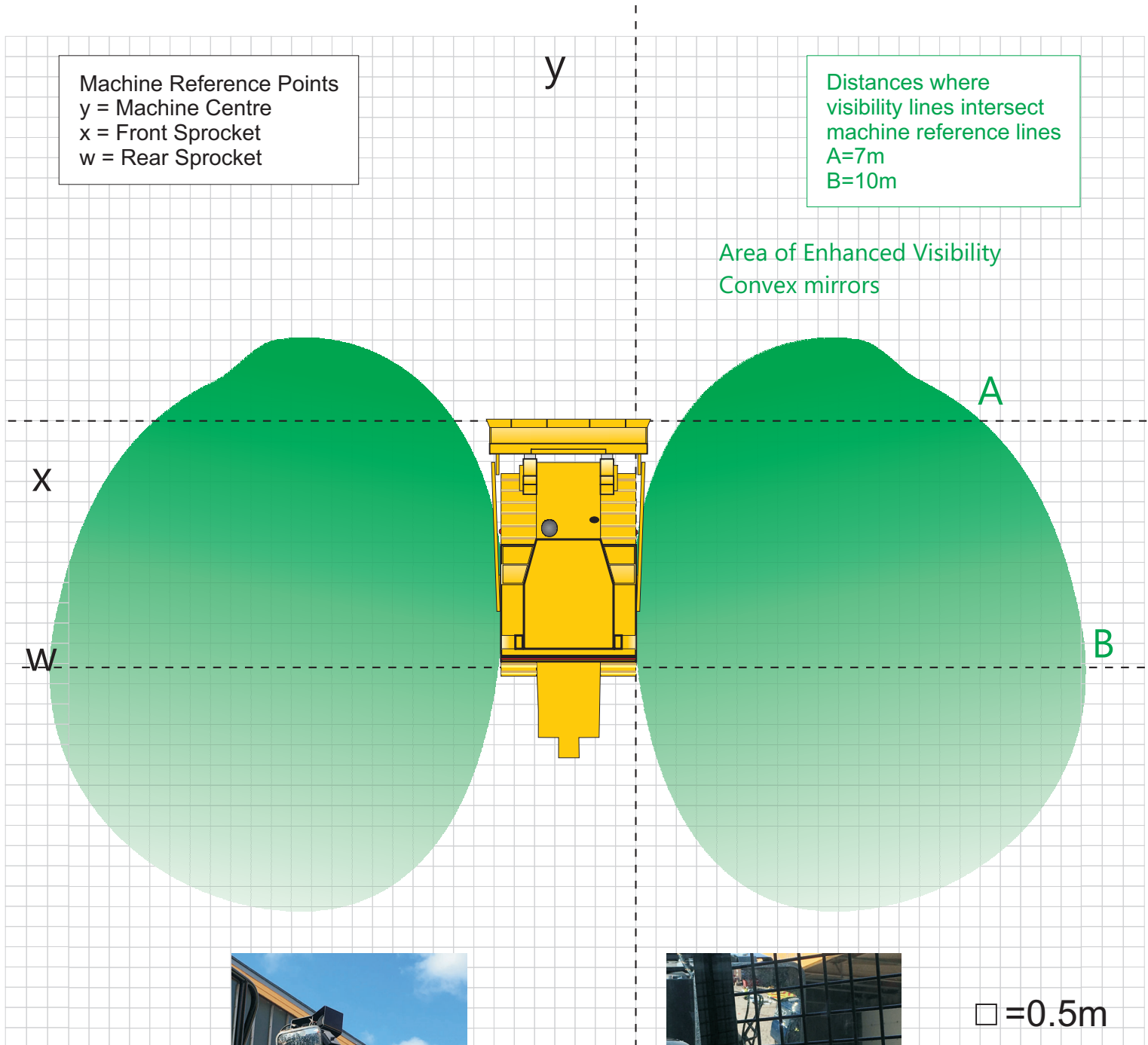
# Enhanced Visibility

nc100

Machine Reference Points  
 $y$  = Machine Centre  
 $x$  = Front Sprocket  
 $w$  = Rear Sprocket

Distances where  
 visibility lines intersect  
 machine reference lines  
 $A=7m$   
 $B=10m$

Area of Enhanced Visibility  
 Convex mirrors



□ = 0.5m





CAT D9T

# Comparison

