

SP438 LED

			@12v	@24v	Waterproof	Weight
>80cd >160cd	75/min	triple flash	145mA	120mA	IP65	240gms

Features:

Low profile directional LED beacon

- Dual voltage 12/24V (10 – 30Vdc)
- High intensity directional hazard warning
- Three wire system to increase intensity
- Clear lens with amber LEDs
- 12 months' guarantee

Applications:

Suitable for many vehicle applications including utility, refuse trucks, street cleaners, delivery, recovery and large vehicles.

Materials:

Polycarbonate lens, ABS base.

Certified to EMC directive 95/54

CE – complies with EMC Directive 89/336/EEC.

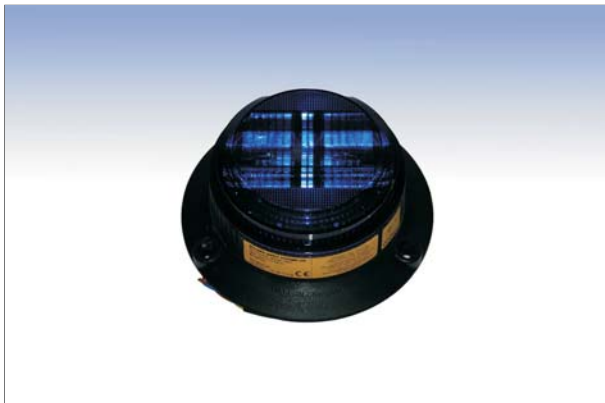


High voltage transient and polarity reversal protection fitted

Operating temperature: -20°C to +55°C.

Amber	Blue	Red	Clear	Green
SP438A	SP438B	SP438R	SP438C	SP438G

SP426 Xenon



			@12v	@24v	Waterproof	Weight
>70cd (amber)	75/min	single flash	380mA	180mA	IP65	242gms

Features:

Low profile directional Xenon beacon

- Dual voltage 12/24V (10 – 30Vdc)
- High intensity hazard warning light
- Directional – all light transmitted in chosen direction
- Up to 8 beacons may be connected to flas synchronously or alternately
- 12 months' guarantee

Applications:

Suitable for many vehicle applications including utility, refuse trucks, street cleaners, drain cleaners, agricultural, delivery, recovery and emergency services.

Materials:

Polycarbonate lens, ABS base.

Certified to EMC directive 95/54

CE – complies with EMC Directive 89/336/EEC.



High voltage transient and polarity reversal protection fitted

Operating temperature: -20°C to +55°C.

Amber	Blue	Red	Clear	Green
SP426A	SP426B	SP426R	SP426C	SP426G

